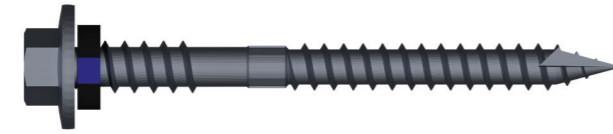


TIMBER FIX

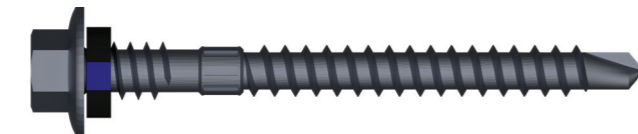
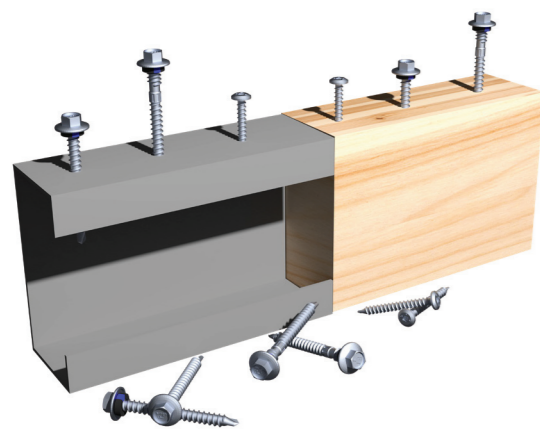


Code	Diameter (mm)	Length (mm)	Effective Thread Length (mm)
FT3 TF70 HWF 129 DT T17 EPDM-CW	5.5	70	45

Applications

DUO-FIX

Timber or Steel - 1.2-3.2mm

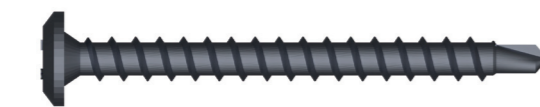


Code	Diameter (mm)	Length (mm)	Effective Thread Length (mm)
FT3 DF65 HWF 1211 DT #DF EPDM CW	5.5	65	50



Code	Diameter (mm)	Length (mm)	Effective Thread Length (mm)
FT3 DF55 HWF 1211 FT #DF EPDM CW	5.5	55	55

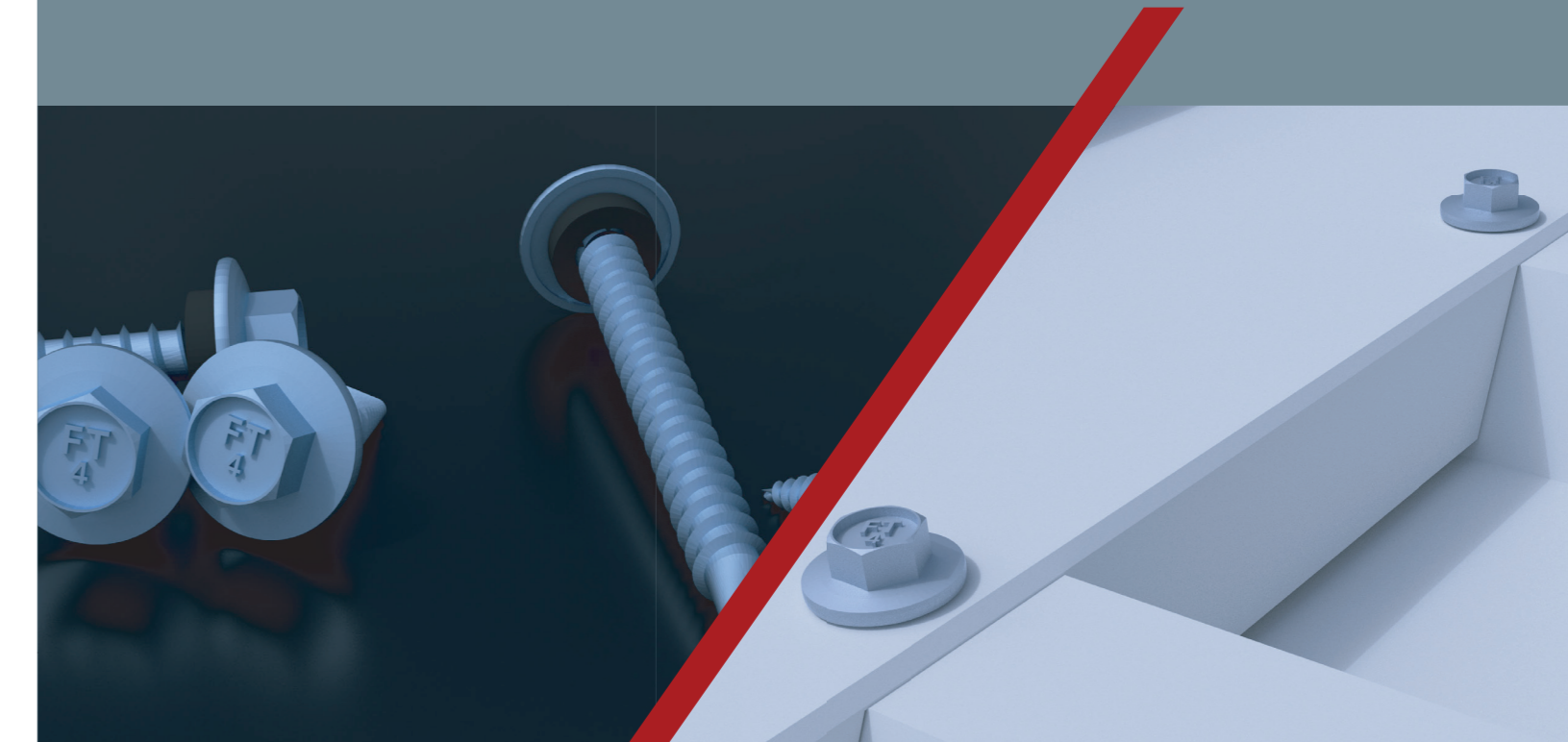
Applications



Code	Diameter (mm)	Length (mm)	Effective Thread Length (mm)
FT3 DF45 WFRSQD 10-12 FT	4.8	45	45

TERMINOLOGY

Terminology	Example of Code	Definition
Fastener Range	FT	FT = Fixtite
Class	3	3 = Class 3 4 = Class 4
Substrate	TF	TF = Timber LS = Light Steel DF = DuoFix Timber or Light Steel 0.8-3.0mm ST = Thin Gauge Steel 2 x 0.8mm TR = Light Gauge Steel Trusses 0.8-3.0mm
Length (mm)	70	Length (mm)
Head Type	HWF	HWF = Hexagonal Head with Integrated Washer Flange HWFS = Hexagonal Head with Integrated Washer Flange Serrated WFRSQD = Wafer Head Square Drive WFRPHD = Wafer Head Phillips Drive
Gauge	12	Gauge
Threads Per Inch	9	Threads Per Inch
Thread Type	FT	FT = Full Thread DT = Dual Thread FTW = Full Thread with Wings FTH = Full Thread Harpoon TT = Tapered Thread
Drill Point	T17	T17 = Timber #3 = Light Steel 1.2-3.0mm #DF = DuoFix Timber or Light Steel 0.8-3.0mm #RP = Reduced Point Thin Gauge Steel 2 x 0.8mm #NP = Needle Point Thin Gauge Steel 2 x 0.8mm
Washer	EPDM CW	EPDM = Low Carbon EPDM CW = Cut Washer DW = BAS Dome Washer



PRODUCT SET OVERVIEW

NAIROBI
Old Mombasa Road
Cell: 0788 202020/ 0735511180
Email: marketing.mrmroofing@safalgroup.com

NAKURU
Nairobi-Nakuru Highway,
Cell: 0738865980
Email: nakuru.mrmroofing@safalgroup.com

NYERI
Nyeri-Nyahururu Road,
Cell: 0733887790
Email: nyeri.mrmroofing@safalgroup.com

MOMBASA
Mombasa-Malindi Highway,
Cell: +254 (0) 733 474 766
Email: mombasa.mrmroofing@safalgroup.com

KISUMU
Sabuni Road, Industrial Area
Cell: 0733 600 150
Email: kisumu.mrmroofing@safalgroup.com

THIKA
Kiboko Road
Cell: 0701 424 708
Toll Free Number: 0800722711
Email: thika.mrmroofing@safalgroup.com

KISII
Industrial Area Road, Daraja Mbili,
Cell: 0718215659
Email: kisii.mrmroofing@safalgroup.com

ELDORET
Kapsoya, Uganda Road
Cell: 0780909040
Email: eldoret.mrmroofing@safalgroup.com

KITENGELA
Kitengela MRM Showroom
Nairobi - Namanga Road
Cell: 0708593691
Email: mrmroofing.kitengela@safalgroup.com



A member of the
SAFAL GROUP

TERMINOLOGY

Head Types

- HWF - Hex Head with Integrated Washer Flange
- HWFS - Hex Head with Serrated Integrated Washer Flange
- WFRPHD - Wafer No 3 Phillips Drive
- WFRSQD - Wafer No 2 Square Drive

Thread Types

- TT - Tapered Full Thread Coarse
- TT - Tapered Thread Medium
- FT - Full Thread Fine
- FTH - Harpoon Full Thread Medium
- FTW - Full Thread Detachable Wings Coarse
- DT - Dual Thread Shank Guard Coarse

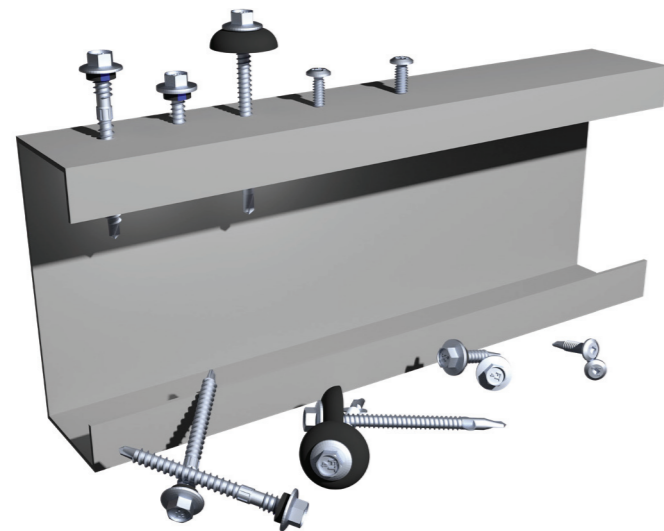
Drill Points

- T17 - Type 17 Timber
- #NP - Needle Point
- #RP - Reduced Point
- #DF - Duo-Fix Point
- #3 - No. 3 Point

Sockets & Bits

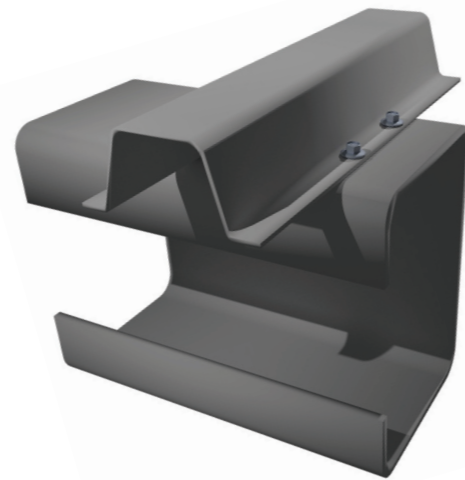
- 5/16 Magentic Socket
- No. 3 Phillips
- No. 2 Square Drive

LIGHT STEEL



Applications

LIGHT GAUGE STEEL TRUSSES



Applications

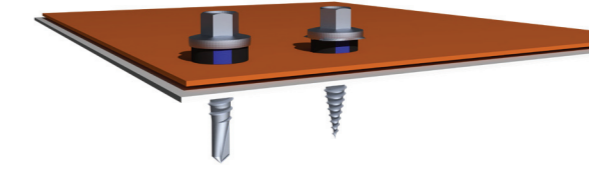
- Single Skin Sheeting
- Built Up Systems

Code	Diameter (mm)	Length (mm)	Effective Thread Length (mm)
FT3 LS20 HWF 12-14 FT #3	5.5	20	20
FT4 LS25 HWF 12-14 DT #3 EPDM CW	5.5	25	25
FT4 LS50 HWF 12-14 DT #3 EPDM CW	5.5	50	35
FT4 LS65 HWF 12-14 DT #3 EPDM CW	5.5	65	40
FT4 LSPC75 HWF 12-14 FTW #3 EPDM DW	5.5	75	75
FT4 LS22 WFRSQD 12-24 FT #3	5.5	22	22
FT4 LS22 WFRPHD 12-24 FT #3	5.5	22	22

Code	Diameter (mm)	Length (mm)	Effective Thread Length (mm)
FT3 TR16 HWFS 10-16 FTH #3	4.8	16	16

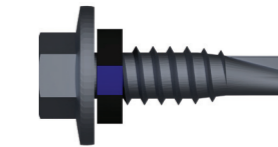
Code	Diameter (mm)	Length (mm)	Effective Thread Length (mm)
FT3 TR20 HWFS 12-14 FTH #3	4.8	20	20

THIN GAUGE STEEL

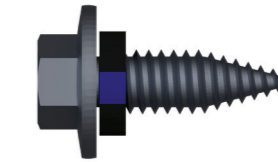


Applications

- Single Skin Sheeting
- Built Up Systems



Code	Diameter (mm)	Length (mm)	Effective Thread Length (mm)
FT4 ST22 HWF 14-20 TT #1 EPDW CW	6.3	22	22



Code	Diameter (mm)	Length (mm)	Effective Thread Length (mm)
FT4 ST22 HWF 14-20 TT NP EPDM CW	6.3	22	22

WARRANTY & USAGE GUIDANCE

Corrosion Class	C2	C3	C4	C5-1	C5-M
Environment Corrosion	Low	Average	High	Very High	Very High
Visual					
Outdoors	Atmospheres with low levels of airborne pollution	Atmospheres with moderate levels of airborne pollution	Atmospheres with high levels of airborne pollution	Atmospheres with high levels of humidity and aggressive atmosphere	Atmospheres with high levels of salt content
	Rural Areas	Coastal areas with low salt levels	Coastal areas with low salt levels	High levels of airborne pollution	Coastal with breakin surf and offshore areas
		Urban and Industrial areas	Urban and Industrial areas	Industrial areas	
Indoors	Non-heated areas with fluctuating levels of temperature and humidity	Areas with moderate levels of humidity and some airborne pollution from production processes	Areas with high levels of humidity and considerable airborne pollution from production processes	Areas with almost permanent condensation and high airborne pollution	Areas with almost permanent condensation and high airborne salt
	Sports Halls and Warehouses	Laundries, breweries and dairies	Chemical plants, swimming pools and dockyards		
Steel					
Mass Loss (g/m ²)	> 10 - 200	> 200 - 400	> 400 - 650	> 650 - 1500	> 650 - 1500
Thickness Reduction (um)	> 1.3 - 25	> 25 - 50	> 50 - 80	> 80 - 200	> 80 - 200
Zinc					
Mass Loss (g/m ²)	> 0.7 - 5	> 5 - 15	> 15- 30	> 30 - 60	> 30 - 60
Thickness Reductcion (um)	> 0.1 - 0.7	> 0.7 - 2.1	> 2.1 - 4.2	> 4.2 - 8.4	> 4.2 - 8.4
Recommended Fastener Material	Carbon Steel	Carbon Steel	Carbon Steel	Stainless Steel 304 or Carbon Steel Moulded	Stainless Steel 304 or Carbon Steel Moulded
Recommended Fastener Class	Class 2	Class 3	Class 4	Class 5	Class 5
Warranty Period	5 Years	15 Years	20 Years	40 Years	40 Years
				20 Years	20 Years